



# **mirroTriage for PTSD Intake**



The logo graphic for mirroTriage features a circular design with a blue border. Inside the circle, there's a stylized image of a modern building with glass windows. Overlaid on this is a white circle containing the word "mirroTriage" in a blue, sans-serif font. Below the white circle, there are two curved, overlapping shapes in blue and white, resembling a stylized 'C' or a protective shield.

**mirroTriage**

**mirroTriage** is an advanced AI-powered triaging tool that performs the initial intake for patients exhibiting symptoms of PTSD. Leveraging state-of-art AI technology, mirroTriage analyzes the tone of voice, facial expressions, and spoken words to assess emotional states such as anxiety, depression, and stress. The tool allows mental health professionals to quickly review the PTSD Key Indicators identified by the AI and then prioritize the urgency and the type of care needed. It generates a comprehensive report for healthcare staff to determine the appropriate next steps.

## Key Features of mirroTriage



### 24/7 Patient Intake Questionnaire

Allows patients to record their video responses at any time. mirroTriage analyzes these responses and sends reports to the staff for further action, significantly boosting efficiency and effectiveness, and improving patient response time.



### Multimodal Input Analysis

Evaluates voice, facial expressions, and text for a holistic understanding of the patient's emotional state.

## Emotional State Key Indicator Detection



### Detects key indicators of PTSD, including:

- **Event Exposure:** Identifies mentions of traumatic events and their impact.
- **Re-experiencing Symptoms:** Detects signs of distressing memories, nightmares, flashbacks, and intense psychological distress.
- **Avoidance Symptoms:** Recognizes efforts to avoid thoughts, feelings, activities, or places related to the trauma.
- **Negative Alterations in Cognitions and Mood:** Identifies negative beliefs, guilt, persistent negative emotions, and feelings of detachment or estrangement.
- **Alterations in Arousal and Reactivity:** Monitors hypervigilance, irritability, concentration issues, sleep disturbances, and reckless behaviour.



### **Key Indicator Deep Dive Reviewer**

mirroTriage deep dive reviewer overlays the key indicators in the patient's recorded media at the exact place there were detected, thus giving a data backed, explainable AI analysis. Caretakers can dive deeply into every word, facial expression or tone of voice that constitutes a key indicator and thus be confident in AI analysis.



### **Comprehensive Reporting**

Generates a thorough report summarizing findings and suggesting appropriate care pathways.



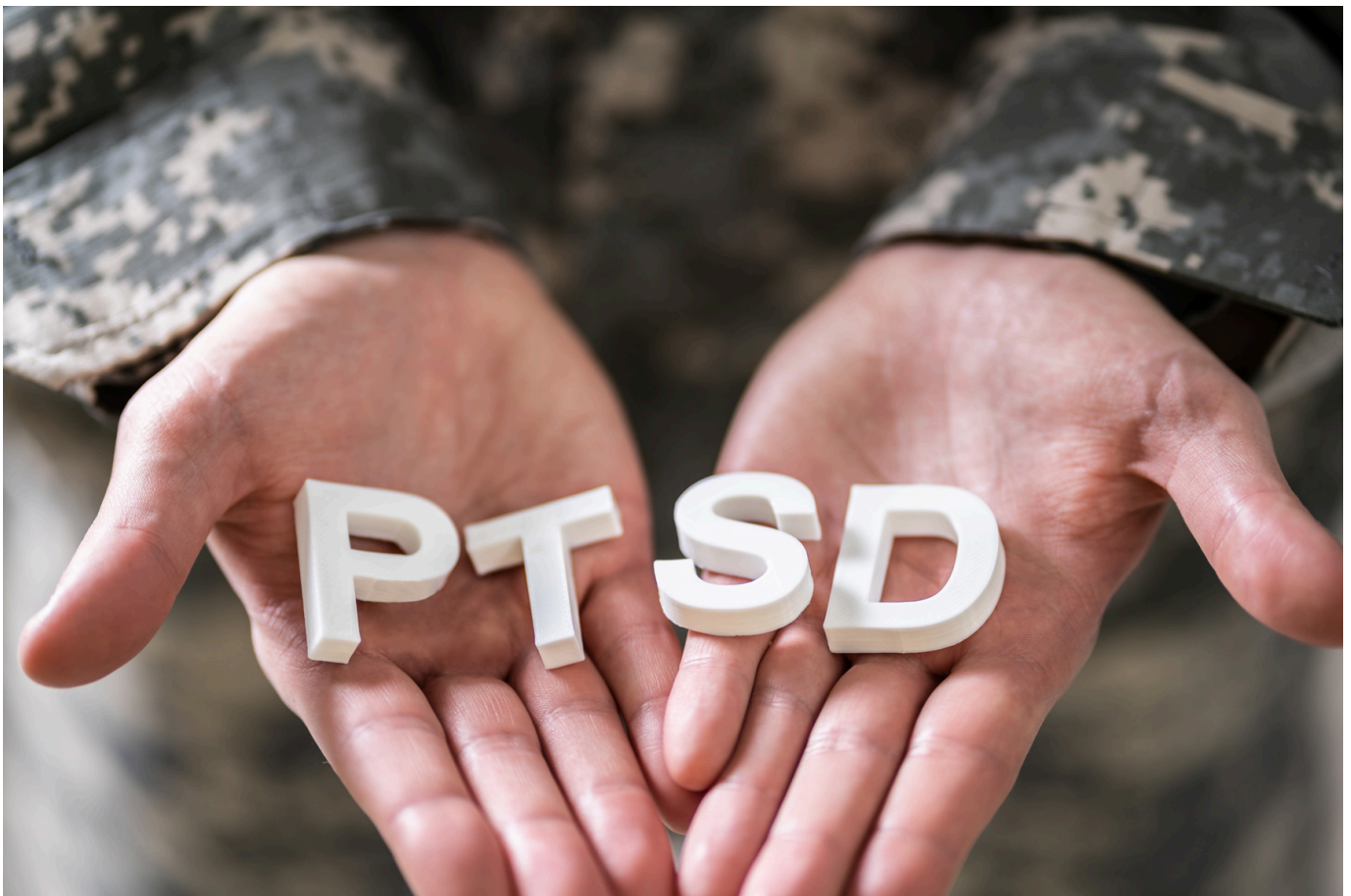
### **Severity and Priority Assessment**

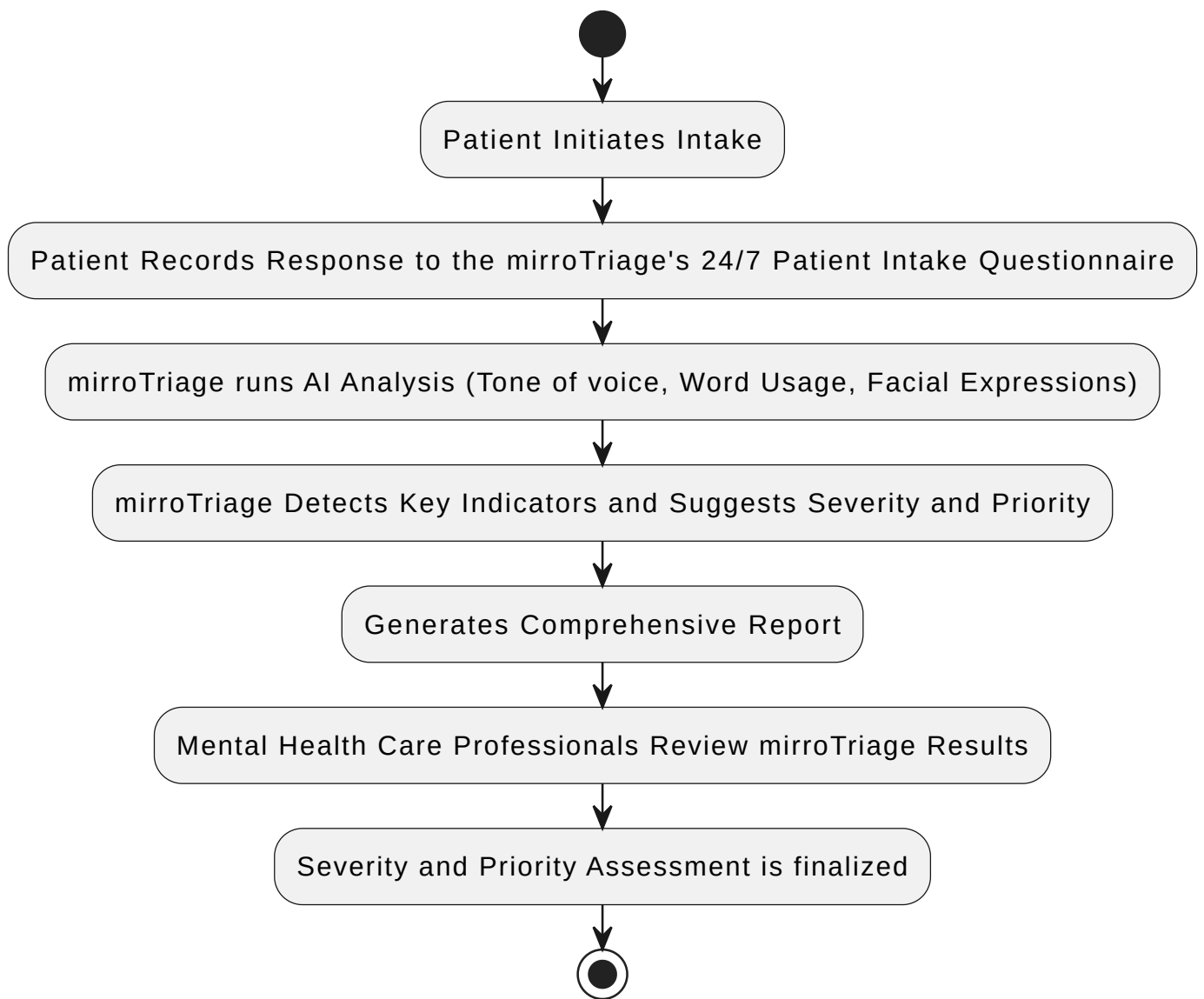
Provides a detailed severity score and priority classification for each patient.



### **Seamless Integration**

Easily integrates with existing electronic health record (EHR) systems.







To further enhance mirroTriage's capabilities, we offer the **mirroTriage Copilot**. In case patient intake requires an online meeting/telehealth call with a Mental Health Provider, AI-powered assistants join online meetings between caretakers and potential patients, unobtrusively analyzing interactions and providing real-time insights. The mirroTriage Copilot generates in-depth patient analysis and sends a detailed report to the caretaker, aiding in decision-making and ensuring timely and appropriate care.



## Key Features of mirroTriage Copilot



### Real-Time Emotional Analysis

Joins online meetings and monitors and evaluates the patient's emotional responses during the interview.



### Comprehensive Reporting

At the end of the meeting, mirroTriage Copilot generates a thorough report summarizing findings and suggesting appropriate care pathways.



### Key Indicator Deep Dive Reviewer

mirroTriage deep dive reviewer overlays the key indicators in the patient's recorded media at the exact place they were detected, thus giving a data-backed, explainable AI analysis. Caretakers can dive deeply into every word, facial expression or tone of voice that constitutes a key indicator and thus be confident in AI analysis.



## Benefits for Mental Health Care Organizations

- **Enhanced Accuracy and Efficiency:** Objective analysis of patient responses reduces subjective bias and enhances the accuracy of assessments.
- **Improved Patient Outcomes:** Early detection and prioritization of PTSD symptoms lead to timely intervention and better patient care.
- **Time Savings:** Automated data collection and analysis free up valuable time for healthcare professionals to focus on patient interaction.
- **Comprehensive Insights:** Detailed reports provide deep insights into the patient's condition, supporting well-informed decision-making.
- **Better Care Coordination:** Facilitates communication and coordination among healthcare providers through standardized reports.

## Conclusion

mirroTriage and mirroTriage Copilot will empower healthcare professionals to deliver exceptional mental health care with increased efficiency and accuracy. We invite you to experience the benefits of our AI-powered solutions and join us in advancing the future of PTSD care.

## Contact Us



Email: [hello@mirro.ai](mailto:hello@mirro.ai)



Website: [www.mirro.ai](http://www.mirro.ai)



Trial/Demo: [mirro.ai/contact-us/](https://mirro.ai/contact-us/)

